

## Douglas-fir – An Ideal Choice For Doors, Door Frames And Structural Applications

Canadian wood species are ready-to-use, seasoned, graded, certified (by PEFC and/or FSC) and legally sourced from sustainably managed forests of B.C., Canada.

Douglas-fir is well known for its unique properties and suitability for a wide variety of applications, from furniture to doors, door frames, windows and structural (post & beam) applications and is considered to be the best-in-class wood.



### Douglas-fir – Appreciated by architects, designers and woodworking professionals for its beauty and strength

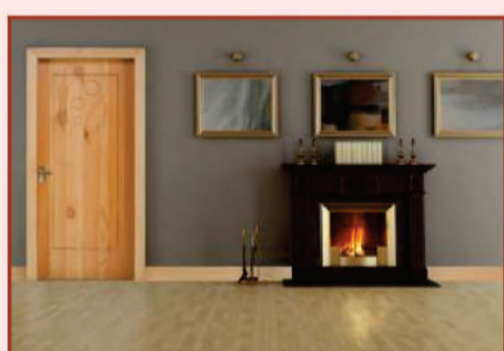
Conventional woods have been used for furniture and structural applications. But now, Douglas-fir is gaining popularity among the architects and woodworking fraternity for such applications. Besides its excellent strength-to-weight ratio and availability in large dimensions, it positively scores over popular hardwood species like teak due to its following properties:

- Stiffness
- Treatability
- Turning and Mortising
- Can be shaped and planed very well and can be sanded to a smooth finish
- Perfect for carvings - its superior workability enables beautifully carved products.
- Nailing – Douglas-fir joinery exhibits great longevity due to its superior nail and screw holding capacity, glue-ability and resistance to splitting.
- Offers a range of staining and finishing options
- Lightweight and easy to handle
- Economy - it is cost-effective and is inexpensive as compared to old-growth teak and comparable in cost to imported plantation teak.
- Standard grades and sizes - it is available in standardized grades and sizes, assuring consumers of a consistent product with every purchase.
- Contribution to green rating points - it is certified by PEFC and/or FSC, giving consumers the assurance that it has been legally and responsibly sourced, leading them to achieve green points.

### Suitability for flush doors, solid doors, door frames and windows

Wood used for exterior applications such as doors and windows needs to meet very demanding conditions. Douglas-fir ticks the right boxes here for doors and window manufacturers:

- Appearance and performance
- Durability
- Excellent dimensional stability
- Low T/R ratio (tangential to radial shrinkage ratio) hence less prone to shrinking and swelling



### Suitability for structural applications

Douglas-fir finds use in laminated arches and roof trusses. However, in India, it is used commonly for post & beam and glue-laminated beams (glulam). For structural use, it is ideal due to the following reasons:

- Better than traditional timbers: High strength and stiffness of laminated timbers enables glulam beams and arches to span large distances without intermediate columns, allowing more design flexibility than conventional timber construction.
- Extraordinary strength-to-weight ratio
- Availability in large dimensions
- It has two times the tensile strength-to-weight ratio relative to steel and greater compressive strength than concrete.



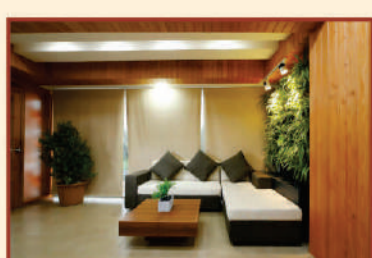
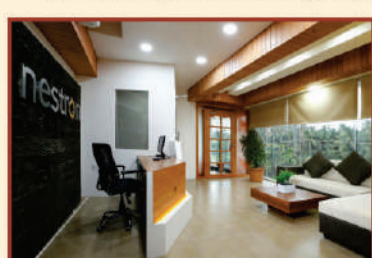
### Suitability for furniture

- Machines well and has good nail and screw holding capacity
- Can be stained as desired and / or recreate the looks of popular species
- Has straight and closed grain enabling fine finish that does not require extensive preparation or filling before coating is applied
- Is easy to laminate using any type of glue



### Suitability for millwork (including mouldings, trim and architectural decorative features)

- Has good appearance and offers great workability
- Has straight grain and is available in long lengths with little or no knots
- Permits good coating adherence and ease of application



For more information join us for our upcoming webinar

**Canadian Wood – Versatile, Sustainable & Legal**

July 6, 2022  
03:00 pm to 04:00 pm

Register now